

**Aluma Flipper Lock Platform**

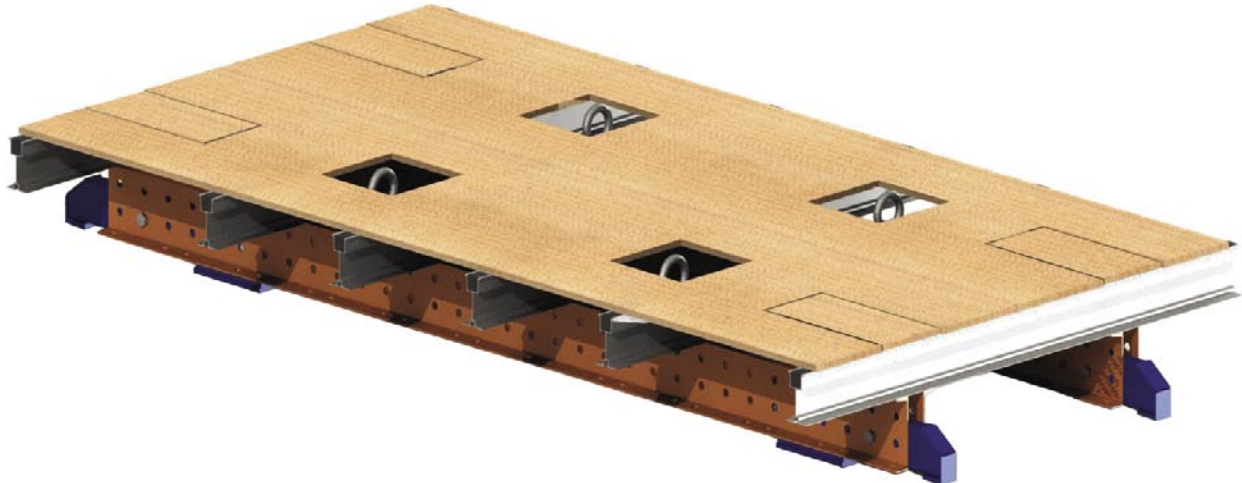
Product Sheet FLIP\_01\_10.07

**Aluma Systems**  
**Concrete Construction**

# The Aluma Flipper Lock Platform: A Timely, Safe & Cost Effective Solution

**Introduction**

Support the inner wall forms and provide a working platform during elevator core forming by safely and efficiently using Aluma's Flipper Lock System. In a crane assisted operation, the system can be maneuvered from level to level, automatically locking into pre-formed pockets. Eliminating the need for wall mounted hangers or adjustable grade jacks, this release and engagement solution effectively reduces the time needed in crane operations and allows increased safety with reduced labor costs.



\* **Note:** Equipment shown is for illustrative purposes only

**Safe**

- Provides a safe and secure means for supporting the inner wall forms for elevator core forming.
- Integrated upper stop plate provides a redundant safety back up for the main support plate.

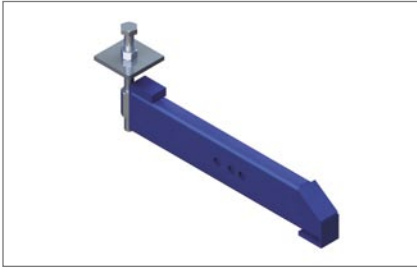
**Smart**

- Movement from level to level requires no disassembly.
- Works with all Aluma wall form systems.
- Platform may be raised independently or together with the wall forms.

**Efficient**

- Simple raising operation with automatic engagement of flipper lock into pre-formed pockets yields significant labor savings compared to other methods of support.

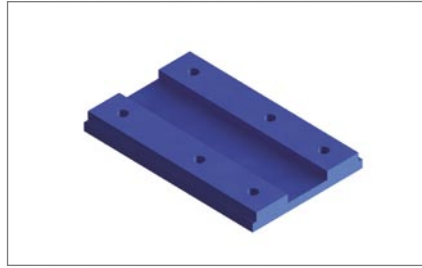
**Main Components**



**1. Flipper Arm**

Pivoting support arm for core form platforms (use with 8"/200mm Aluma steel Waler or 10"/203mm and 12"/305mm channels). As an added safety feature the upper stop plate will prevent the arm from rotating past horizontal.

**Item No.** 8823



**2. Arm Stopper**

Flipper arm stop for flipper lock.

**Item No.** 8824

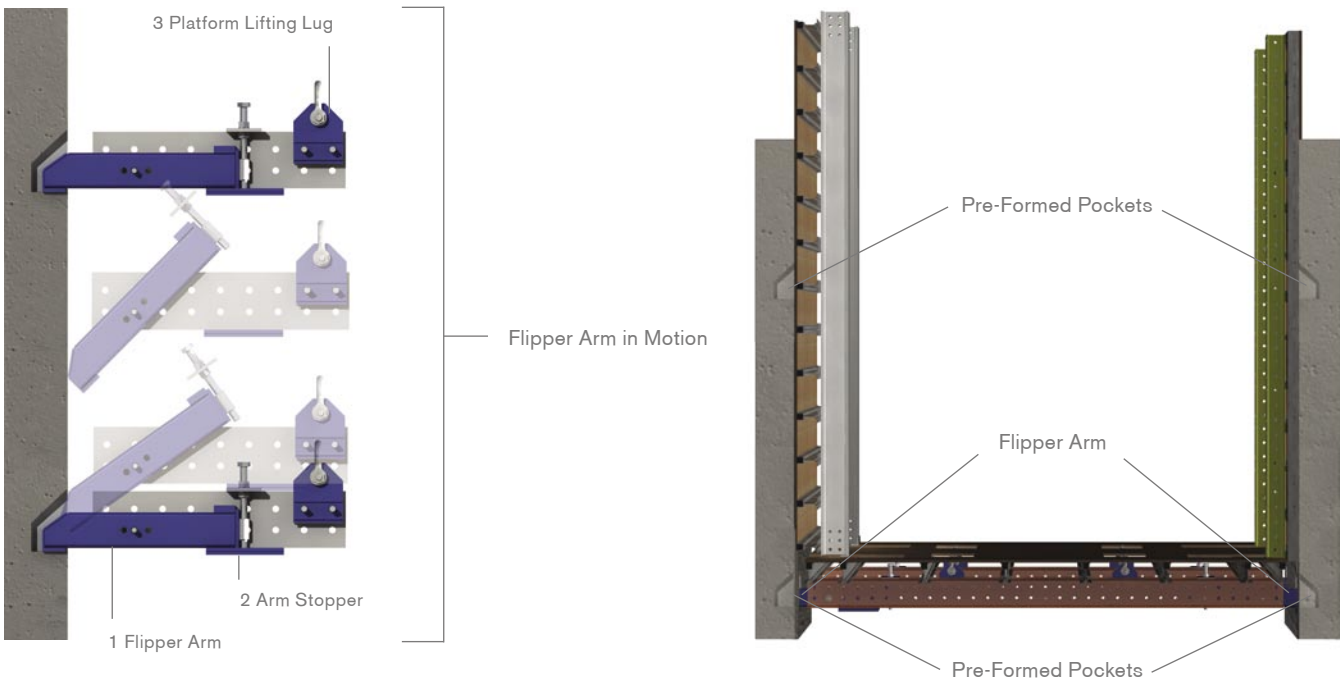


**3. Platform Lifting Lug**

Lug to facilitate lifting of the flipper arm platform or wall form/platform assembly.

**Item No.** 9141

**Typical Application uses Standard Rental Fleet 8" Walers or Custom Length Double Channels**



All local regulatory and safety requirements are to be followed.

\* **Note:** Equipment shown is for illustrative purposes only

**CANADA**

<b>Calgary, AB</b> T 403.212.4832	<b>Ottawa, ON</b> T 613.745.7081	<b>Saskatoon, SK</b> T 306.931.7888	<b>Vancouver, BC</b> T 604.940.3000
<b>Edmonton, AB</b> T 780.440.1692	<b>Saint John, NB</b> T 506.633.9820	<b>St. John's, NL</b> T 709.753.3325	<b>Victoria, BC</b> T 250.652.9409
<b>Montreal, QC</b> T 514.383.1985	<b>Halifax, NS</b> T 902.468.9533	<b>Toronto, ON</b> T 905.669.5282	<b>Winnipeg, MB</b> T 204.633.7072

**USA**

<b>Atlanta, GA</b> T 404.699.0979	<b>Houston, TX</b> T 832.226.5100	<b>San Jose, CA</b> T 408.238.6969
<b>Baltimore, MD</b> T 301.937.5090	<b>Las Vegas, NV</b> T 702.866.6513	<b>Seattle, WA</b> T 425.251.0270
<b>Chicago, IL</b> T 847.875.4526	<b>Phoenix, AZ</b> T 602.212.0350	<b>Tampa, FL</b> T 813.626.1133

**INTERNATIONAL**

<b>International</b> T 905.699.5282	<b>Japan</b> T +81.090.5797.0643	<b>Middle East</b> T +971.4.341.3717
<b>Indonesia</b> T +62.21.526.2405	<b>Latvia/Baltics</b> T +371.29.430.518	<b>South East Asia</b> T +65.6268.0375
<b>Israel</b> T +972.6.6769963	<b>Mexico/S.America</b> T +52.55.9000.3749	<b>United Kingdom</b> T +44.1702.232.464