

---

# Lite™ Handset Clamp Forming System

Product Features and Benefits

# Lite™ | Handset Clamp Forming System

PG 2

Lite has been designed to be the most efficient and easy to use handset clamp system on the market

## Advantages at a glance:

1. Strong & robust – 1,500 psf pour pressure, and up to 2,000 psf on columns
2. Easy to set – all panels in imperial dimensions and symmetrical
3. 2 different clamp types provide versatility and panel transfer by either hand or flown as gangs with a crane
4. Less labor for details – Fillers with built in nailers, one-piece scaffold bracket
5. Column forming: Universal Panel can form columns in 2" increments from 6" to 32" and 36"



1.



2.



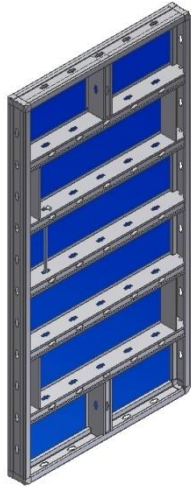
3.



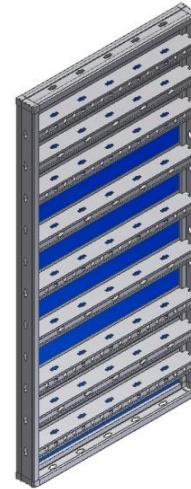
4.



5.



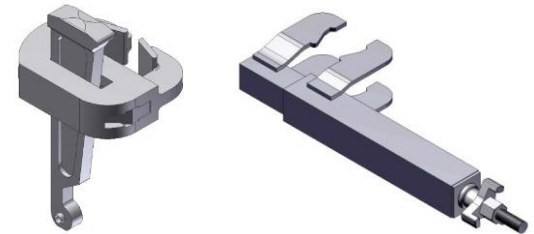
Lite Panel



Lite Universal Panel



Lite Stripping Corner



Lite Mini and Adjustable Clamps

# Lite™ | Technical Specifications

PG 4

PRODUCT DESCRIPTION:	Handset clamp forming system
PANEL HEIGHTS:	9   6   4   3 feet (ft.)
PANEL/FILLER WIDTHS:	36   30   24   18   12   6   2   1.5   1 inch (in.)
UNIVERSAL PANEL:	Width = 36 in.   Heights = 9   6   4   3 ft.
POUR PRESSURE RATING:	1,500 psf.   Up to 2,000 psf. (as a column form)
CORROSION PROTECTION:	Galvanized panels and accessories
FORM LINING THICKNESS:	½ inch
FORM LINING:	Composite – wood with heavy-duty plastic top veneer
STANDARD CONNECTION:	Mini clamp
PANEL WEIGHT:	6.75 lbs. per square foot
SPECIAL FEATURES:	All panels have built-in safety tie offs that meet OSHA standards
	2 different clamp types – mini-clamp and aligner-clamp
	All panels are symmetrical
	Fewer clamps – only 3 clamps required for 9 ft. panels
	All hardware connections are fast pin – no extra tools required
	4000 lb. capacity Crane hooks permit larger gangs
	Hinged pilaster forms are adjustable in 2-inch increments
	Walkway brackets and filler side rail sets have plastic nailer strips
	One-piece scaffold brackets



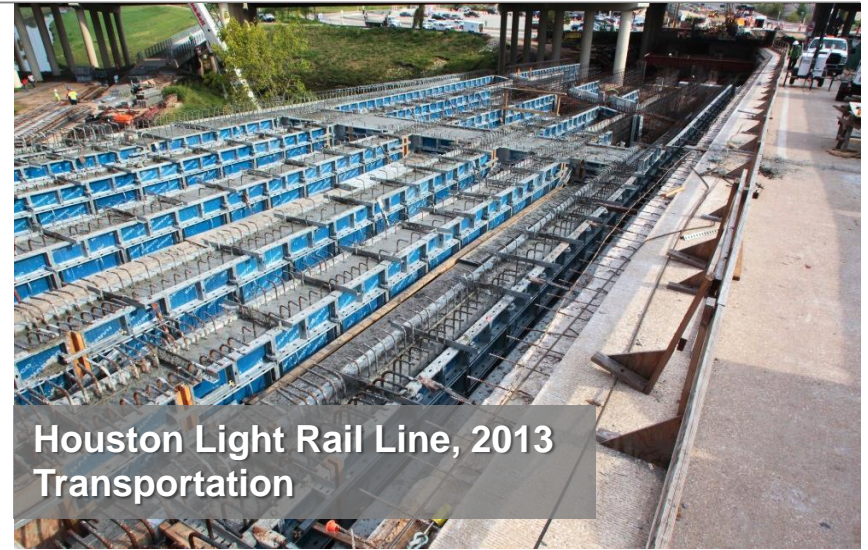


# Lite™ | Reference Projects

PG 5



Morenci Mine, 2012  
Mining Site



Houston Light Rail Line, 2013  
Transportation



Thomasville, 2013  
Commercial Building



Baker Hughes, 2013  
Sand-handling Tanks